

School Performance Report 2018

Dandenong North Primary School

September 2018



DANDENONG NORTH PRIMARY SCHOOL (4723)

Domains: 6 out of 6
Measures: 15 out of 15

Overall Performance Group



Current Level: High

Change Level: Maintained

Performance is static over time (including some cases where performance is moderate but on a declining trajectory) and requires renewed effort to be high performing.

As an overall performance group, this indicates a mix of results at the domain and measure level.

A school's overall performance group represents its combined performance on the Achievement, School Climate, Student Attitudes, Engagement, Participation and Senior Secondary (for secondary, Pri/Sec schools only) domains.

Domain Performance Group

Achievement (Reading)



The Achievement (Reading) domain measures performance on NAPLAN assessments in Reading; which includes achievement in top two bands, lifting low performers and positive change in learning gain.

Achievement (Numeracy)



The Achievement (Numeracy) domain measures performance on NAPLAN assessments in Numeracy; which includes achievement in top two bands, lifting low performers and positive change in learning gain.

School Climate



The School Climate domain measures staff endorsements of Collective Efficacy and Academic Emphasis from the School Staff Survey.

Student Attitude



The Attitudes to School domain measures students engagements in Stimulating Learning, Learning Confidence and Student Safety from the Attitudes to School Survey.

Engagement



The Engagement domain focuses on students attendance.

Participation



The Participation domain measures students participation in NAPLAN assessments, responses to School Staff Survey and responses to Attitudes to School Survey.



DANDENONG NORTH PRIMARY SCHOOL (4723)

Domain	Domain Performance Group	Measure	Measure Performance Group	Current Result (Year)	Current Result (Latest year)	Current Level	Change result ^A (Last 3 years)	Change Level
Achievement (Reading)	Renew (Medium, Maintained)	% of students in Top two bands (Year 5)	Stretch	2018	27.2%	Low	3.6%	Increased
		% of students in Bottom two bands (Year 5)*	Stretch	2018	16.7%	Medium	-2.7%	Decreased
		% of students with high or medium relative learning gain (Years 3 to 5)	Renew	2018	71.3%	Medium	-1.4%	Maintained
Achievement (Numeracy)	Renew (Medium, Maintained)	% of students in Top two bands (Year 5)	Stretch	2018	30.4%	Medium	3.8%	Increased
		% of students in Bottom two bands (Year 5)*	Influence	2018	7.1%	Low	-6.3%	Decreased Significantly
		% of students with high or medium relative learning gain (Years 3 to 5)	Renew	2018	74.4%	Medium	-3.0%	Decreased
School Climate	Renew (High, Maintained)	% of positive endorsement in Collective Efficacy	Renew	2017	75.2%	Medium	-2.5%	Decreased
		% of positive endorsement in Academic Emphasis	Influence	2017	85.9%	Very High	-0.4%	Maintained
Student Attitude	Influence (Very High, Increased Significantly)	% of positive endorsement in Stimulated Learning (Years 5-6)	Influence	2018	96.2%	Very High	23.4%	Increased Significantly
		% of positive endorsement in Sense of Confidence (Years 5-6)	Influence	2018	95.9%	Very High	12.8%	Increased Significantly
		% of positive endorsement in Managing Bullying (Years 5-6)	Influence	2018	95.3%	Very High	10.7%	Increased Significantly
Engagement	Renew (High, Maintained)	Attendance Rate	Renew	2017	93.1%	High	0.0%	Maintained



DANDENONG NORTH PRIMARY SCHOOL (4723)

Domain	Domain Performance Group	Measure	Measure Performance Group	Current Result (Year)	Current Result (Latest year)	Current Level	Change result [^] (Last 3 years)	Change Level
Participation	Stretch (Medium, Increased)	% of students participating in NAPLAN (Year 5, Reading)	Stretch	2018	95.8%	Medium	1.6%	Increased
		% of students participating in ATOS (Years 5-6)	Stretch	2018	88.9%	Low	2.6%	Increased
		% of staff participating in Staff survey	Renew	2017	87.5%	High	1.0%	Maintained

* a low Current Result and a decrease in Change Result is desirable for this measure

[^] two years of data is used to measure changes relating to the Attitude to School survey



How do you read your School Performance Report

Differentiated School Performance Groups



The Differentiated School Performance Groups (Figure 1) complement the revised approach to school review and differentiated approach to school improvement.

Five performance groups are identified.

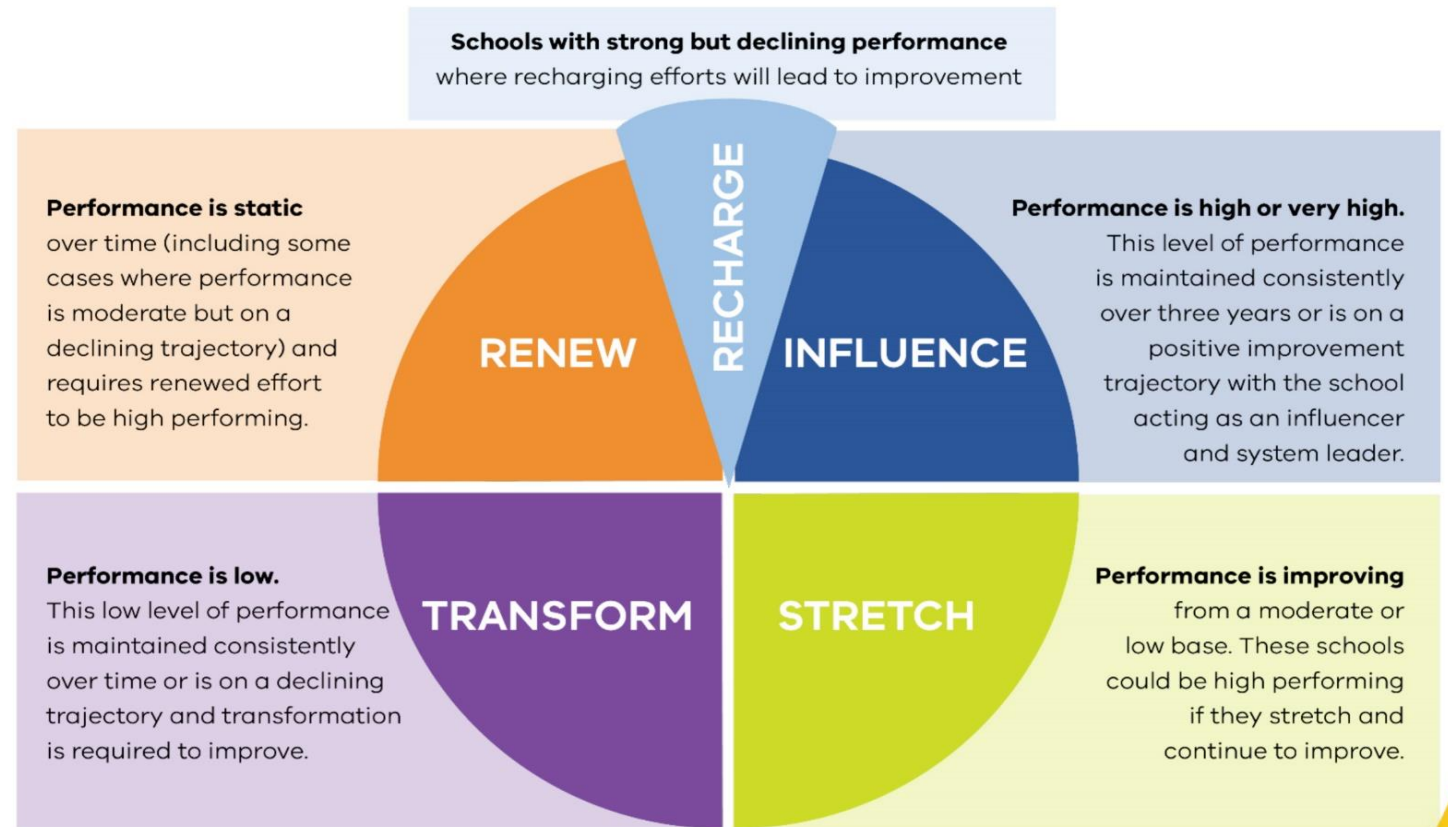


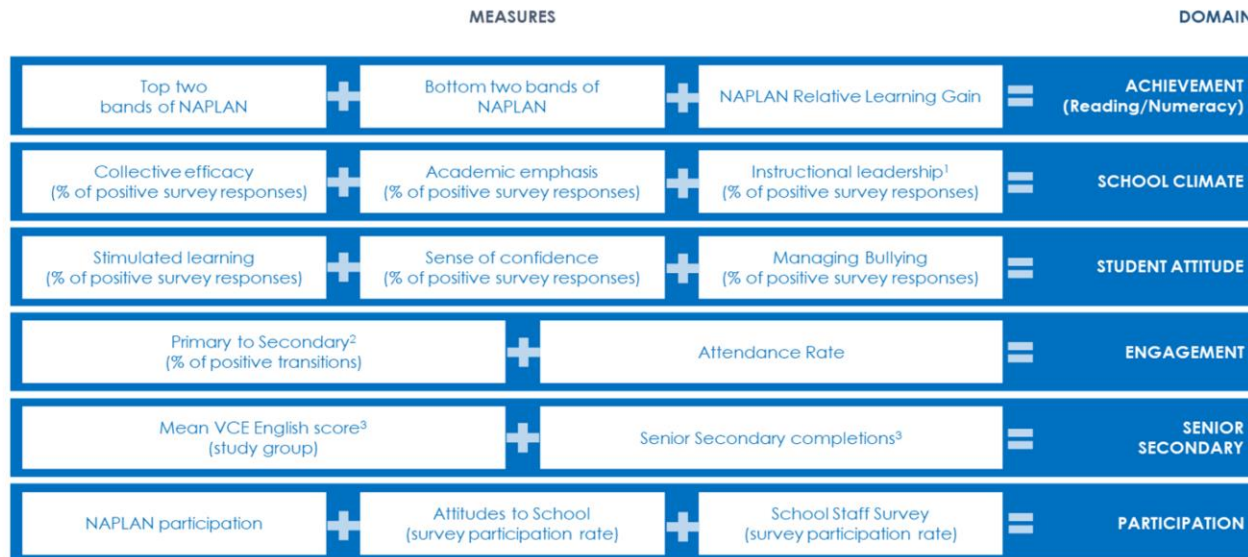
FIGURE 1: THE FIVE SCHOOL PERFORMANCE GROUPS

Determining Your School's Performance Group

Current Level	Change Level				
	1 (Decreased Significantly)	2 (Decreased)	3 (Maintained)	4 (Increased)	5 (Increased Significantly)
5 (Very High)					
4 (High)					
3 (Medium)					
2 (Low)					
1 (Very Low)					

FIGURE 2: SCHOOL PERFORMANCE TABLE

- To determine your school's performance group, the 'current level' and 'change level' of all schools in the state are segmented into five performance levels to create a five-by-five table (25 segments) for each measure
- Your school's placement within this table, based on your school's 'current level' and 'change level' for each applicable measure, determines the performance group to which your school belongs
- Measures are aggregated to the domain level and an overall performance group level to provide an overall summary of your school's performance



¹The Instructional Leadership Measure in the School Climate Domain will be introduced in 2020.
²The Primary to Secondary Measure in the Engagement Domain will be introduced in the future.
³Only applicable to schools that offer senior secondary programs.

- The **six domains** and associated **measures** shown at left form the basis of the differentiation method.
- These have been selected based on their alignment to FISO school improvement objectives and Education State targets.

FIGURE 3: MEASURES AND DOMAINS

Reading your school performance report: Summary page



The summary page provides a graphical summary of your school's overall performance group and your performance in each applicable domain.

Shows your school's overall performance group.

Shows your school's current level and change level for the overall performance group.

Shows your school's performance group for each domain.

Indicates the number of domains and measures that have been used to determine your school's performance group.

Domains: 6 out of 6
Measures: 15 out of 19

Overall Performance Group

Current Level: Medium
Change Level: Maintained

A school's overall performance group represents its combined performance on the Achievement, School Climate, Student Attitudes, Engagement, Participation and Senior Secondary (for secondary, Pri/Sec schools only) domains.

Domain Performance Group

<p>Achievement (Reading)</p> <p style="background-color: #f4a460; padding: 5px; text-align: center;">RENEW</p>	<p>The Achievement (Reading) domain measures performance on NAPLAN assessments in Reading; which includes achievement in top two bands, lifting low performers and positive change in learning gain.</p>
<p>Achievement (Numeracy)</p> <p style="background-color: #8e44ad; padding: 5px; text-align: center;">TRANSFORM</p>	<p>The Achievement (Numeracy) domain measures performance on NAPLAN assessments in Numeracy; which includes achievement in top two bands, lifting low performers and positive change in learning gain.</p>
<p>School Climate</p> <p style="background-color: #5dade2; padding: 5px; text-align: center;">RECHARGE</p>	<p>The School Climate domain measures staff endorsements of Collective Efficacy and Academic Emphasis from the School Staff Survey.</p>
<p>Student Attitude</p> <p style="background-color: #f1c40f; padding: 5px; text-align: center;">STRETCH</p>	<p>The Attitudes to School domain measures students engagements in Stimulating Learning, Learning Confidence and Student Safety from the Attitudes to School Survey.</p>
<p>Engagement</p> <p style="background-color: #2980b9; padding: 5px; text-align: center;">INFLUENCE</p>	<p>The Engagement domain focuses on students attendance.</p>
<p>Participation</p> <p style="background-color: #f4a460; padding: 5px; text-align: center;">RENEW</p>	<p>The Participation domain measures students participation in NAPLAN assessments, responses to School Staff Survey and responses to Attitudes to School Survey.</p>
<p>Senior Secondary</p> <p style="text-align: center;">N/A</p>	<p>The Senior Secondary domain measures students achievement in VCE English subject and VCE/VCAL completion rates.</p>

Performance is static over time (including some cases where performance is moderate but on a declining trajectory) and requires renewed effort to be high performing.

As an overall performance group, this indicates a mix of results at the domain and measure level.

Text describes your school's overall performance.

Provides an overview of what is measured in each domain.

Performance and Evaluation Division | **Strategy and Performance Group**

measuring what matters

Page 8 of 9

How to read your school performance report: Detail pages



Shows the domain.

Your school's domain performance group, current level and change level for each domain.

The measures that are used to determine your school's performance in each domain.

Your school's performance group for each measure.

Your school's most recent performance result for each measure.

The change in your school's performance over the last 3 years[^] for each measure.

Domain	Domain Performance Group	Measure	Measure Performance Group	Current Result (Year)	Current Result (Latest year)	Current Level	Change result [^] (Last 3 years)	Change Level
Achievement (Reading)	Influence (High, Increased)	% of students in Top two bands (Year 9)	Influence	2018	24%	High	1%	Increased
		% of students in Bottom two bands (Year 9)*	Stretch	2018	23%	Medium	-2%	Decreased
		% of students with high or medium relative learning gain (Years 7 to 9)	Influence	2018	76%	High	4%	Increased
Achievement (Numeracy)	Renew (Medium, Maintained)	% of students in Top two bands (Year 9)	Transform	2018	13%	Low	-2%	Decreased
		% of students in Bottom two bands (Year 9)*	Stretch	2018	15%	Medium	-4%	Decreased
		% of students with high or medium relative learning gain (Years 7 to 9)	Renew	2018	71%	Medium	2%	Maintained
School Climate	Renew (Medium, Decreased)	% of positive endorsement in Collective Efficacy	Renew	2017	48%	Medium	-7%	Decreased Significantly
		% of positive endorsement in Academic Emphasis	Renew	2017	50%	Medium	-3%	Decreased
Student Attitude	Influence (High, Increased)	% of positive endorsement in Stimulated Learning (Years 7-12)	Stretch	2018	54%	Low	3%	Increased
		% of positive endorsement in Sense of Confidence (Years 7-12)	Renew	2018	69%	High	1%	Maintained
		% of positive endorsement in Managing Bullying (Years 7-12)	Influence	2018	71%	Very High	2%	Increased
Engagement	Transform (Low, Decreased)	Attendance Rate	Transform	2017	90%	Low	-1%	Decreased

Shows your school's change level for each measure.

Shows your school's current level for each measure.

[^]Two years of data is used to measure change in performance in the Student Attitude Domain.